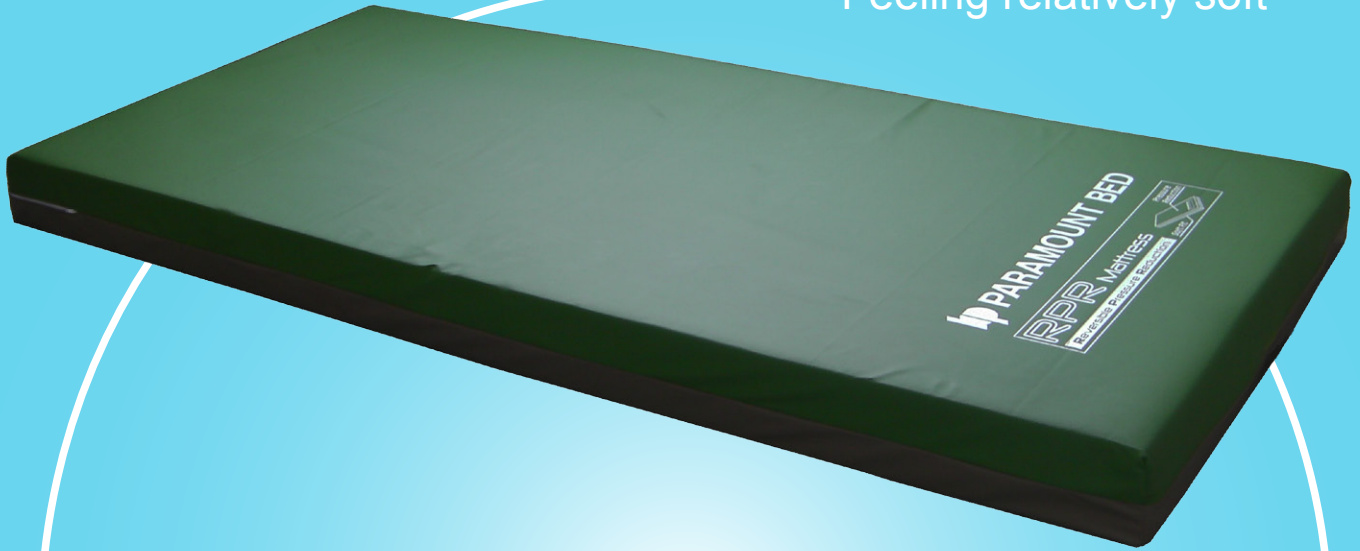
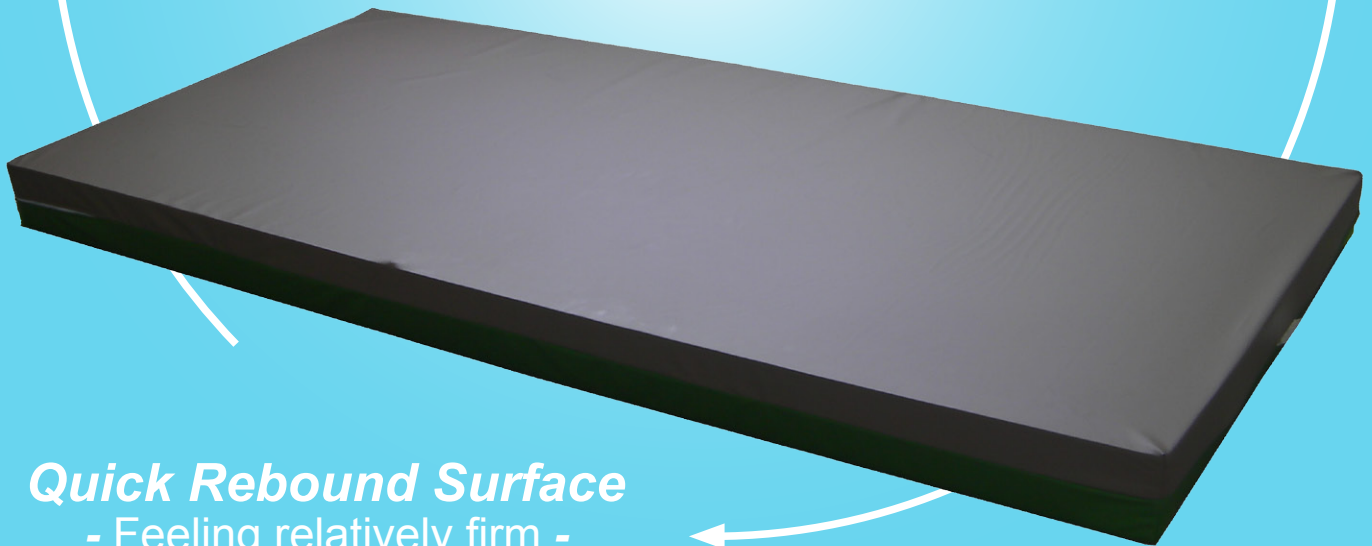


PE-7000series

Slow Rebound Surface
- Feeling relatively soft -



Reversible Pressure Reduction mattress improves the satisfaction of guests in hospital



Quick Rebound Surface
- Feeling relatively firm -

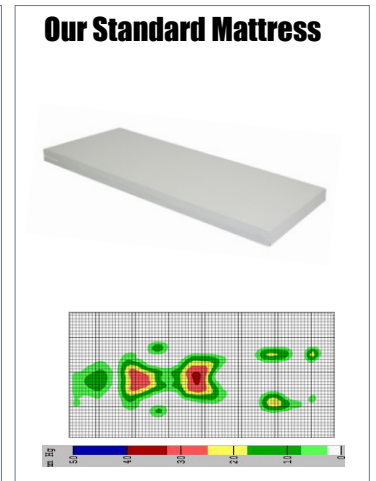
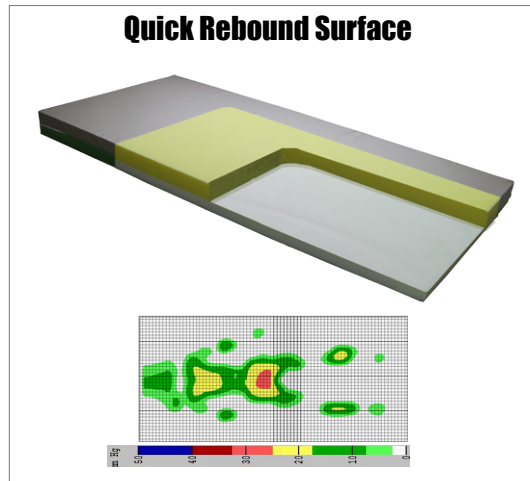
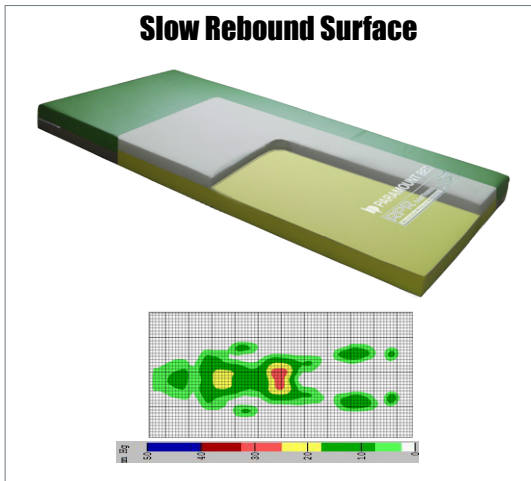
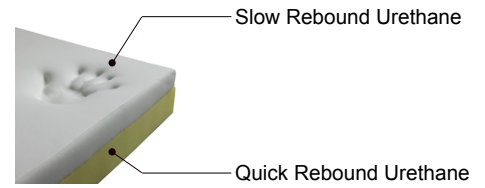
RPR Mattress
Reversible Pressure Reduction



Slow Rebound
Quick Rebound

1, Reversible Pressure Reduction Mattress

Double-layer system, which consists of slow rebound & quick rebound urethane foams enables this mattress to be "Reversible Pressure Reduction" mattress. Although each firmness is different, both Slow Rebound Surface & Quick Rebound Surface are used as a pressure reduction mattress.

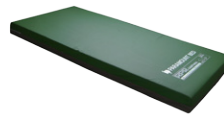


The subject: Height 1800mm, Weight 66Kg, Male

2, Dual-Side Choice

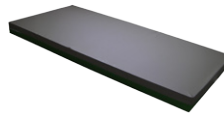
Which feeling do you
(your guest) prefer?

Slow Rebound Surface



- Feeling relatively soft -

Quick Rebound Surface



- Feeling relatively firm -

3, MRSA Anti-Bacterial Treatment



Antibacterial agent is mixed into the cover on the process of manufacturing to undergo MRSA antibacterial treatment. In addition, it is also effective for various kinds of minor germs other than MRSA, such as Staphylococcus aureus and colon bacillus.

Specifications

Model No.	PE-7001	PE-7002	PE-7011	PE-7012
Overall Length	1910mm	1910mm	2000mm	2000mm
Overall Width	830mm	910mm	830mm	910mm
Thickness	120mm			
Cover	MRSA Anti-bacterial, Fire retardant, Water proof surface			
Material	Cover	Surface: Polyester with polyurethane film laminated		
	Cushion	Double-layer urethane foam		

PARAMOUNT BED CO., LTD.

Head office 14-5 2-Chome Higashisuna Koto-Ku Tokyo 136-8670 JAPAN
Tel: +81-3-3648-2961 Fax: +81-3-3648-2420
<http://www.paramount.co.jp/english/>

